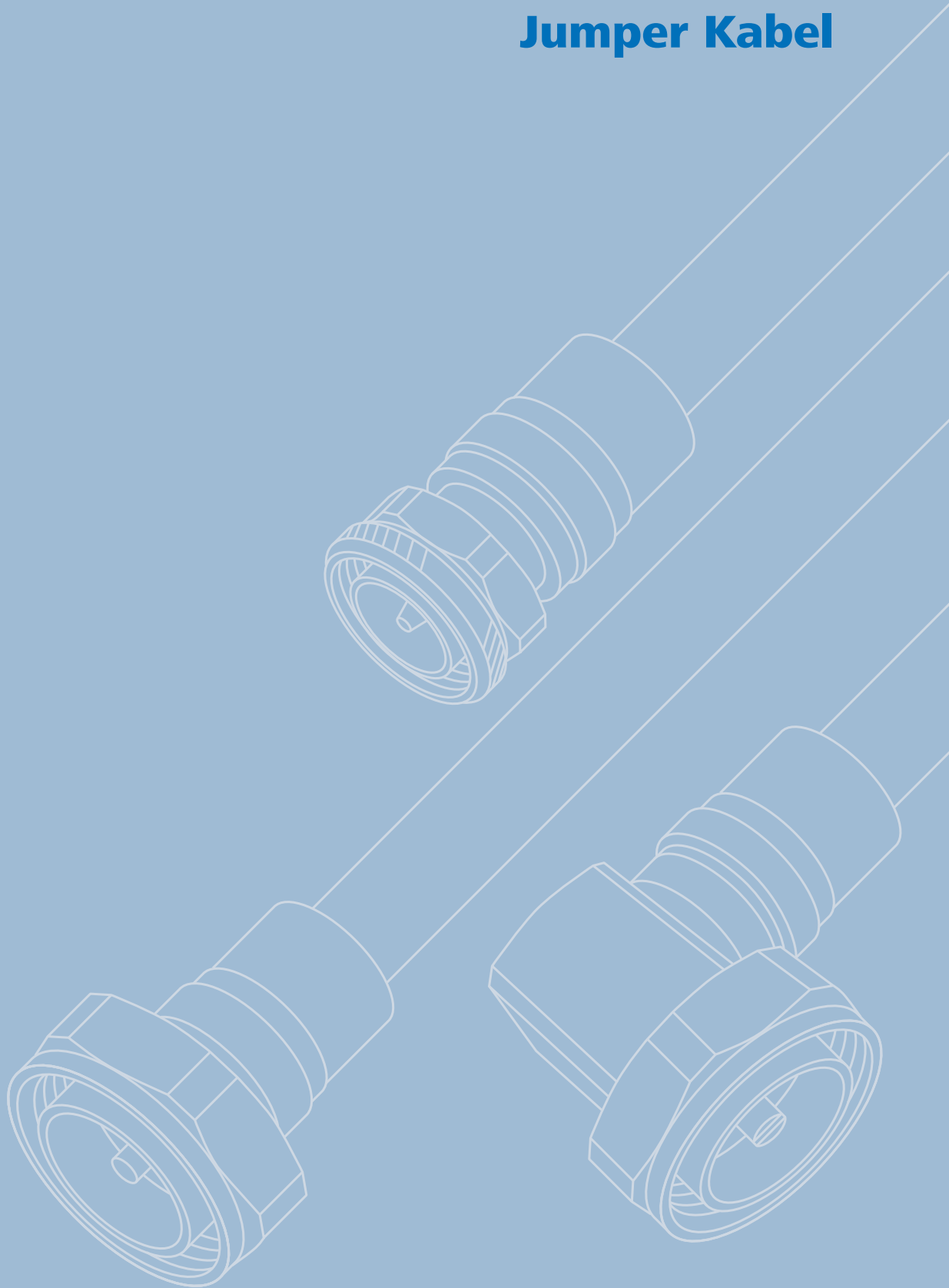


30

Jumper Cables **Jumper Kabel**





30

Jumper Cables Jumper Kabel

30.1	1/2" Flex Jumper Cable	499	30.1	1/2" Flex Jumper Kabel	499
30.1.1	7-16 to 7-16	499	30.1.1	7-16 auf 7-16	499
30.1.2	7-16 to N	501	30.1.2	7-16 auf N	501
30.1.3	N to N	502	30.1.3	N auf N	502
30.1.4	4.3-10 to 4.3-10 (Screw Type)	502	30.1.4	4.3-10 auf 4.3-10 (Screw Type)	502
30.1.5	7-16 to 4.3-10 (Screw Type)	504	30.1.5	7-16 auf 4.3-10 (Screw Type)	504
30.1.6	4.3-10 to 4.3-10 (Push Pull Type)	504	30.1.6	4.3-10 auf 4.3-10 (Push Pull Type)	504
30.1.7	4.3-10 to 2.2-5 (Screw Type)	505	30.1.7	4.3-10 auf 2.2-5 (Screw Type)	505
30.1.8	2.2-5 to 2.2-5 (Screw Type)	506	30.1.8	2.2-5 auf 2.2-5 (Screw Type)	506
30.2	3/8" Flex Jumper Cable	506	30.2	3/8" Flex Jumper Kabel	506
30.2.1	7-16 to 7-16	506	30.2.1	7-16 auf 7-16	506
30.2.2	4.3-10 to 4.3-10 (Screw Type)	508	30.2.2	4.3-10 auf 4.3-10 (Screw Type)	508
30.2.3	4.3-10 to 4.3-10 (Hand Screw Type)	509	30.2.3	4.3-10 auf 4.3-10 (Hand Screw Type)	509
30.2.4	4.3-10 to 4.3-10 (Push Pull Type)	509	30.2.4	4.3-10 auf 4.3-10 (Push Pull Type)	509
30.2.5	4.3-10 to 2.2-5 (Screw Type)	510	30.2.5	4.3-10 auf 2.2-5 (Screw Type)	510
30.2.6	2.2-5 to 2.2-5 (Screw Type)	510	30.2.6	2.2-5 auf 2.2-5 (Screw Type)	510
30.2.7	NEX10® to NEX10® (Screw Type)	511	30.2.7	NEX10® auf NEX10® (Screw Type)	511
30.2.8	NEX10® to 4.3-10 (Screw Type)	511	30.2.8	NEX10® auf 4.3-10 (Screw Type)	511
30.2.9	NEX10® to N (Screw Type)	511	30.2.9	NEX10® auf N (Screw Type)	511
30.3	1/4" Flex Jumper Cable	512	30.3	1/4" Flex Jumper Kabel	512
30.3.1	7-16 to 7-16	512	30.3.1	7-16 auf 7-16	512
30.3.2	7-16 to N	514	30.3.2	7-16 auf N	514
30.3.3	7-16 to 4.3-10 (Screw Type)	514	30.3.3	7-16 auf 4.3-10 (Screw Type)	514
30.3.4	7-16 to 4.3-10 (Push Pull Type)	515	30.3.4	7-16 auf 4.3-10 (Push Pull Type)	515
30.3.5	N to N	515	30.3.5	N auf N	515
30.3.6	N to 4.3-10 (Screw Type)	516	30.3.6	N auf 4.3-10 (Screw Type)	516
30.3.7	N to 4.3-10 (Push Pull Type)	516	30.3.7	N auf 4.3-10 (Push Pull Type)	516
30.3.8	4.3-10 to 4.3-10 (Screw Type)	517	30.3.8	4.3-10 auf 4.3-10 (Screw Type)	517
30.3.9	4.3-10 to 4.3-10 (Push Pull Type)	517	30.3.9	4.3-10 auf 4.3-10 (Push Pull Type)	517
30.3.10	4.3-10 (Screw Type) to 4.3-10 (Push Pull Type)	518	30.3.10	4.3-10 (Screw Type) auf 4.3-10 (Push Pull Type)	518
30.3.11	4.3-10 to 2.2-5 (Screw Type)	518	30.3.11	4.3-10 auf 2.2-5 (Screw Type)	518
30.2.12	2.2-5 to 2.2-5 (Screw Type)	519	30.2.12	2.2-5 auf 2.2-5 (Screw Type)	519
30.2.13	NEX10® to NEX10® (Screw Type)	519	30.2.13	NEX10® auf NEX10® (Screw Type)	519
30.3.14	NEX10® to 4.3-10 (Screw Type)	520	30.3.14	NEX10® auf 4.3-10 (Screw Type)	520
30.3.15	NEX10® (Screw Type) to N	520	30.3.15	NEX10® (Screw Type) auf N	520
30.4	1/2" Feeder Jumper Cable	521	30.4	1/2" Feeder Jumper Kabel	521
30.4.1	7-16 to 7-16	521	30.4.1	7-16 auf 7-16	521
30.4.2	7-16 to 4.3-10 (Screw Type)	521	30.4.2	7-16 auf 4.3-10 (Screw Type)	521
30.4.3	4.3-10 to 4.3-10 (Screw Type)	522	30.4.3	4.3-10 auf 4.3-10 (Screw Type)	522

The Telegärtner Jumper Cables as reliable connection to the mobile communication antenna and are characterized by high quality and excellent technical performance. The outstanding properties are a result of our passion for detail, the continuous improvement of our connector designs and the optimized production processes. Besides the shown standard lengths, Telegärtner also offers customized solutions depending on customers' requirements. The Jumper Cables are available in 1/4" Flex, 3/8" Flex, 1/2" Flex and 1/2" Feeder cable sizes. They can be combined with the N, 7-16 and 4.3-10 as well as 2.2-5, NEX10® and 1.5-3.5 connector series.

Die Telegärtner Jumper-Kabel als zuverlässiges Bindeglied zur Mobilfunkantenne bestehen durch ihre hohe Güte und exzellente technische Werte. Die herausragenden Eigenschaften sind unserer Liebe zum Detail, der kontinuierlichen Verbesserung der Steckverbinder-Designs und den optimierten Fertigungsprozessen zu verdanken. Neben den hier gezeigten Standard-Längen bietet Telegärtner auch Sonderlängen auf Kundenwunsch an. Die Jumper-Kabel sind erhältlich in den Kabelgrößen 1/4" Flex, 3/8" Flex, 1/2" Flex und 1/2" Feeder. Die Kabel können mit den Steckverbinderreihen N, 7-16 und 4.3-10 sowie 2.2-5, NEX10® und 1.5-3.5 kombiniert werden.

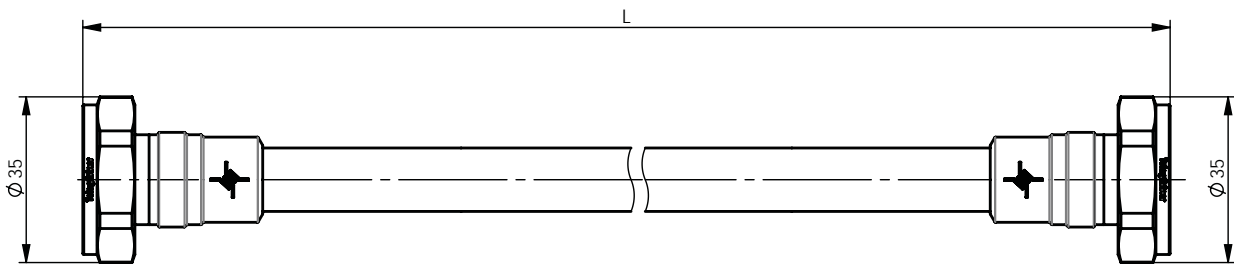
1/2" Flex Jumper Cable

1/2" Flex Jumper Kabel

30.1

7-16 to 7-16
7-16 auf 7-16

30.1.1



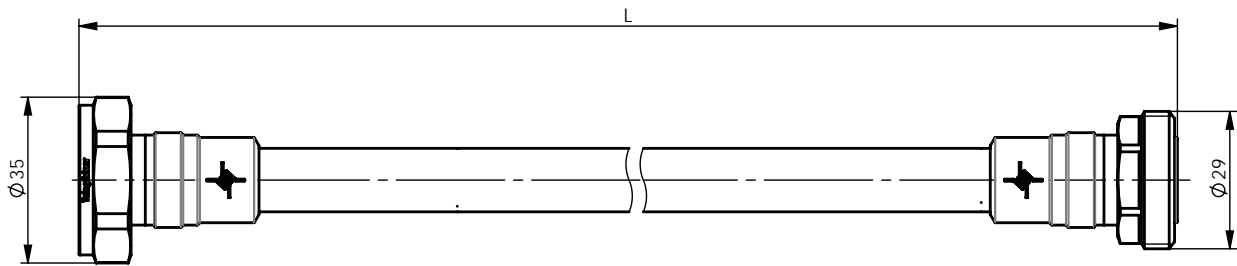
Part No. Old Part No.	Length Länge	Type Ausführung	Remarks Anmerkungen
100009799 L00010D0552	0,5 m	m-m Sti-Sti	JMPS/0500K
100009800 L00010D0553	1 m	m-m Sti-Sti	JMPS/1000K
100010036 L00011D0185	2 m	m-m Sti-Sti	JMPS/2000K
100010195 L00012D0064	3 m	m-m Sti-Sti	JMPS/3000K
100010361 L00013D0059	5 m	m-m Sti-Sti	JMPS/5000K

30.1

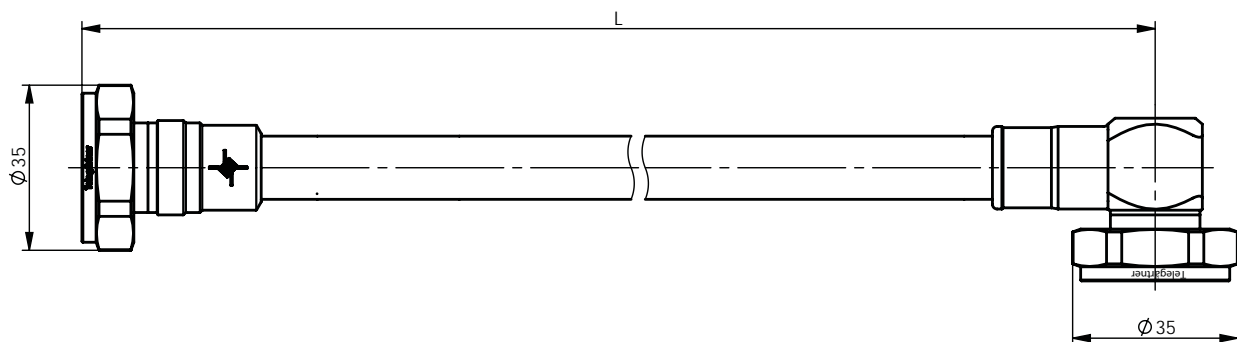
30.1

1/2" Flex Jumper Cable

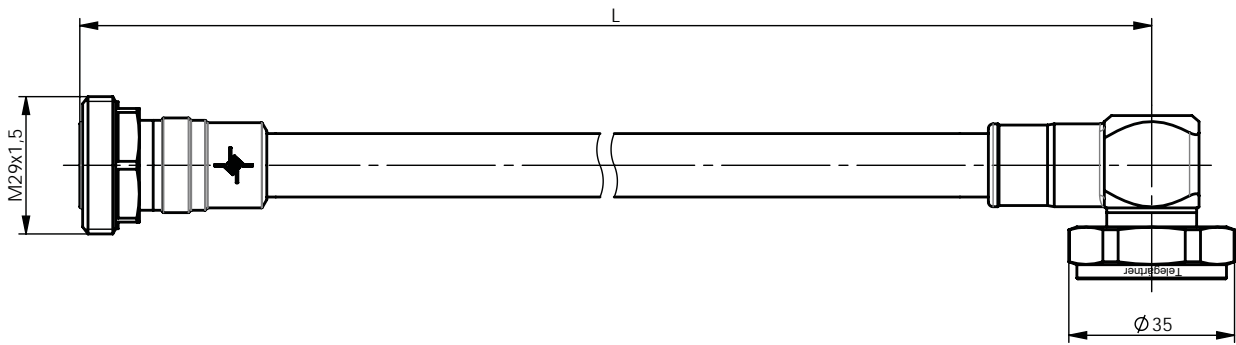
1/2" Flex Jumper Kabel



Part No. Old Part No.	Length Länge	Type Ausführung	Remarks Anmerkungen
100009797 L00010D0550	0,5 m	m-f Sti-Bu	JMPS/0501K
100009798 L00010D0551	1 m	m-f Sti-Bu	JMPS/1001K
100010034 L00011D0183	2 m	m-f Sti-Bu	JMPS/2001K
100010193 L00012D0062	3 m	m-f Sti-Bu	JMPS/3001K
100010359 L00013D0057	5 m	m-f Sti-Bu	JMPS/5001K



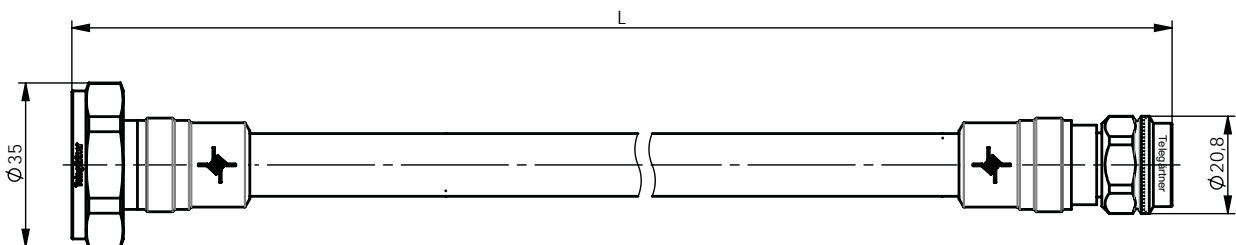
Part No. Old Part No.	Length Länge	Type Ausführung	Remarks Anmerkungen
100009802 L00010D0565	0,5 m	m-m90° Sti-Sti90°	JMPS/0502K
100009803 L00010D0566	1 m	m-m90° Sti-Sti90°	JMPS/1002K
100010038 L00011D0187	2 m	m-m90° Sti-Sti90°	JMPS/2002K
100010197 L00012D0066	3 m	m-m90° Sti-Sti90°	JMPS/3002K
100010363 L00013D0062	5 m	m-m90° Sti-Sti90°	JMPS/5002K



Part No. Old Part No.	Length Länge	Type Ausführung	Remarks Anmerkungen
100009804 L00010D0567	0,5 m	f-m90° Bu-Sti90°	JMPS/0512K
100009805 L00010D0568	1 m	f-m90° Bu-Sti90°	JMPS/1012K
100010040 L00011D0189	2 m	f-m90° Bu-Sti90°	JMPS/2012K
100010199 L00012D0068	3 m	f-m90° Bu-Sti90°	JMPS/3012K
100010365 L00013D0064	5 m	f-m90° Bu-Sti90°	JMPS/5012K

7-16 to N
7-16 auf N

30.1.2



Part No. Old Part No.	Length Länge	Type Ausführung	Remarks Anmerkungen
100009614 L00010A1685	0,5 m	m-m Sti-Sti	JMPS/0504K
100009615 L00010A1686	1 m	m-m Sti-Sti	JMPS/1004K
100009925 L00011A0420	2 m	m-m Sti-Sti	JMPS/2004K
100010110 L00012A0131	3 m	m-m Sti-Sti	JMPS/3004K
100010286 L00013A0268	5 m	m-m Sti-Sti	JMPS/5004K

30.1

30.1

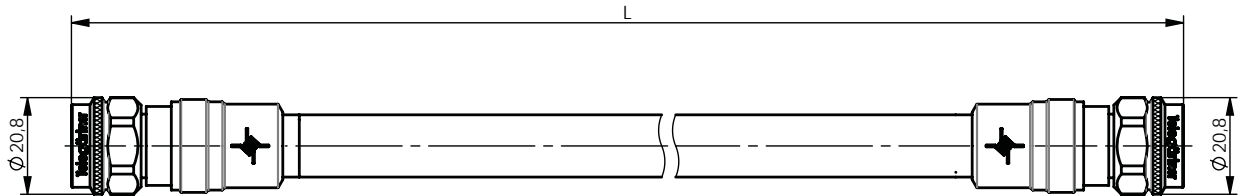
1/2" Flex Jumper Cable

1/2" Flex Jumper Kabel

30.1.3

N to N

N auf N

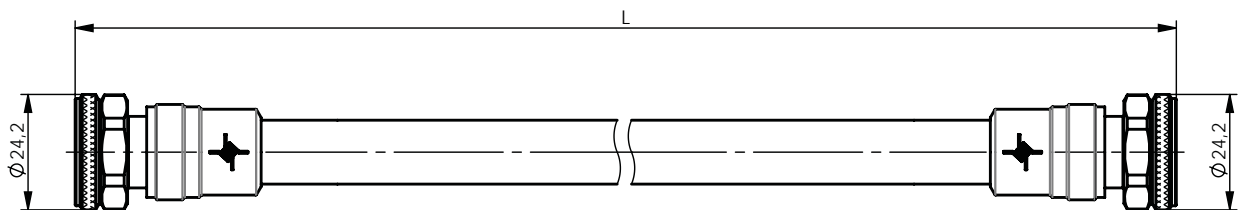


Part No. Old Part No.	Length Länge	Type Ausführung	Remarks Anmerkungen
100009616 L00010A1687	0,5 m	m-m Sti-Sti	JMPS/0544K
100009585 L00010A1634	1 m	m-m Sti-Sti	JMPS/1044K
100009897 L00011A0252	2 m	m-m Sti-Sti	JMPS/2044K
100010108 L00012A0116	3 m	m-m Sti-Sti	JMPS/3044K
100010325 L00013A0352	5 m	m-m Sti-Sti	JMPS/5044K

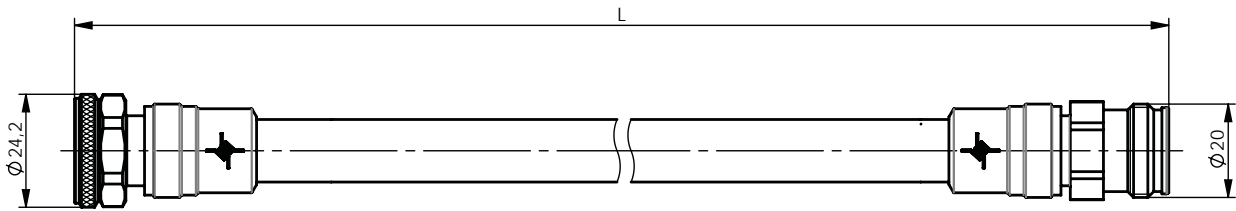
30.1.4

4.3-10 to 4.3-10 (Screw Type)

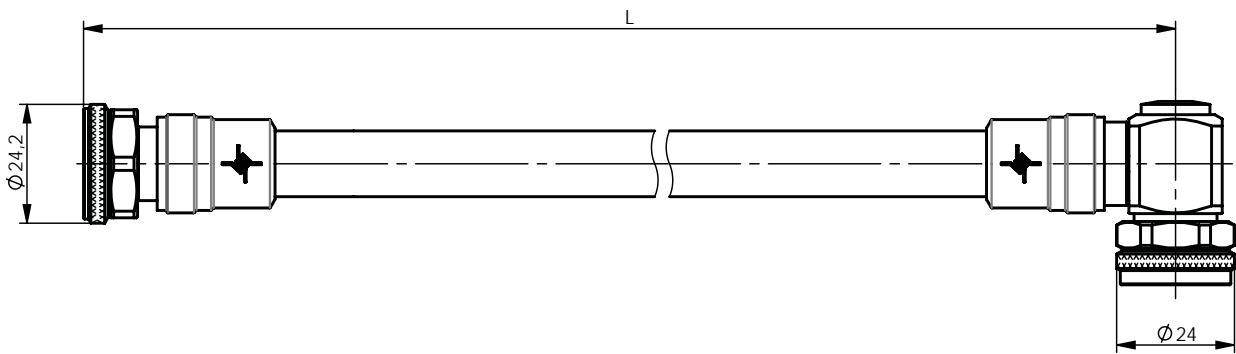
4.3-10 auf 4.3-10 (Screw Type)



Part No. Old Part No.	Length Länge	Type Ausführung	Remarks Anmerkungen
100009617 L00010A1689	0,5 m	mS-mS StiS-StiS	JMPS/0577K
100009618 L00010A1690	1 m	mS-mS StiS-StiS	JMPS/1077K
100009932 L00011A0436	2 m	mS-mS StiS-StiS	JMPS/2077K
100010143 L00012A0235	3 m	mS-mS StiS-StiS	JMPS/3077K
100010294 L00013A0313	5 m	mS-mS StiS-StiS	JMPS/5077K



Part No. Old Part No.	Length Länge	Type Ausführung	Remarks Anmerkungen
100009619 L00010A1691	0,5 m	mS-f StiS-Bu	JMPS/0578K
100009620 L00010A1692	1 m	mS-f StiS-Bu	JMPS/1078K
100009933 L00011A0437	2 m	mS-f StiS-Bu	JMPS/2078K
100010144 L00012A0236	3 m	mS-f StiS-Bu	JMPS/3078K
100010295 L00013A0314	5 m	mS-f StiS-Bu	JMPS/5078K



Part No. Old Part No.	Length Länge	Type Ausführung	Remarks Anmerkungen
100009621 L00010A1693	0,5 m	mS-m90°S StiS-Sti90°S	JMPS/0579K
100009622 L00010A1694	1 m	mS-m90°S StiS-Sti90°S	JMPS/1079K
100009934 L00011A0438	2 m	mS-m90°S StiS-Sti90°S	JMPS/2079K
100010145 L00012A0237	3 m	mS-m90°S StiS-Sti90°S	JMPS/3079K
100010296 L00013A0315	5 m	mS-m90°S StiS-Sti90°S	JMPS/5079K

30.1

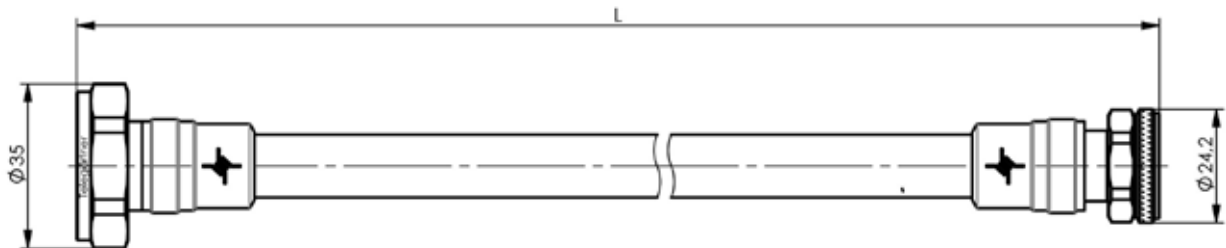
1/2" Flex Jumper Cable

1/2" Flex Jumper Kabel

30.1.5

7-16 to 4.3-10 (Screw Type)

7-16 auf 4.3-10 (Screw Type)

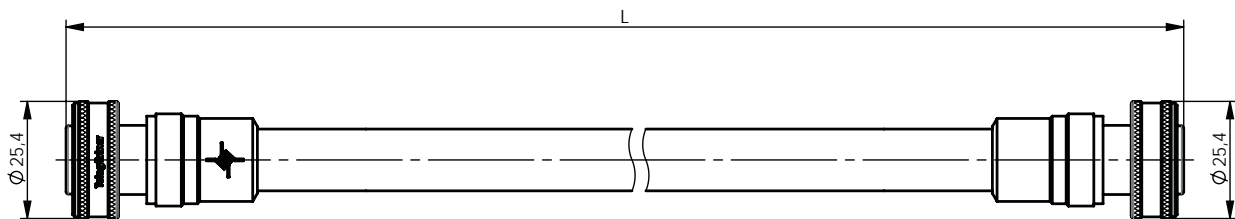


Part No.	Length Länge	Type Ausführung	Remarks Anmerkungen
100009660 L00010A1742	0,5 m	m-mS Sti-StiS	JMPS/0507K
100009661 L00010A1743	1 m	m-mS Sti-StiS	JMPS/1007K
100009952 L00011A0461	2 m	m-mS Sti-StiS	JMPS/2007K
100010160 L00012A0257	3 m	m-mS Sti-StiSi	JMPS/3007K
100010315 L00013A0339	5 m	m-mS Sti-StiSi	JMPS/5007K

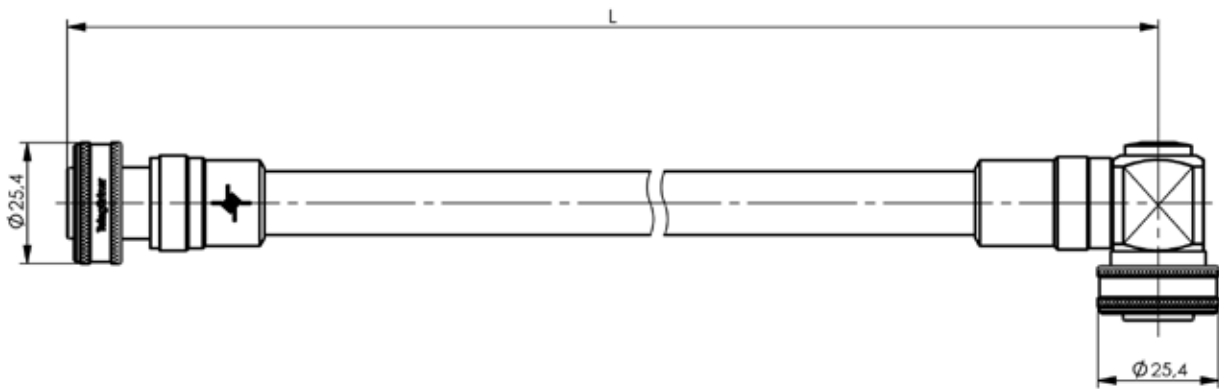
30.1.6

4.3-10 to 4.3-10 (Push Pull Type)

4.3-10 auf 4.3-10 (Push Pull Type)



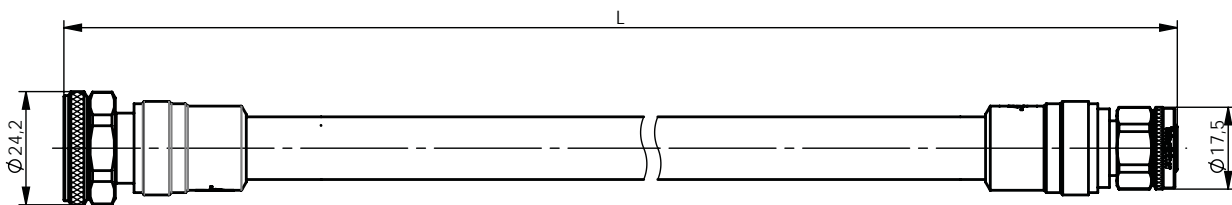
Part No.	Length Länge	Type Ausführung	Remarks Anmerkungen
100009623 L00010A1697	0,5 m	mPP-mPP StiPP-StiPP	JMPS/05BBK
100009624 L00010A1698	1 m	mPP-mPP StiPP-StiPP	JMPS/10BBK
100009935 L00011A0440	2 m	mPP-mPP StiPP-StiPP	JMPS/20BBK
100010146 L00012A0239	3 m	mPP-mPP StiPP-StiPP	JMPS/30BBK
100010297 L00013A0317	5 m	mPP-mPP StiPP-StiPP	JMPS/50BBK



Part No. Old Part No.	Length Länge	Type Ausführung	Remarks Anmerkungen
100009625 L00010A1701	0,5 m	mPP-m90°PP StiPP-Sti90°PP	JMPS/05BDK
100009626 L00010A1702	1 m	mPP-m90°PP StiPP-Sti90°PP	JMPS/10BDK
100010147 L00012A0241	3 m	mPP-m90°PP StiPP-Sti90°PP	JMPS/30BDK
100009936 L00011A0442	2 m	mPP-m90°PP StiPP-Sti90°PP	JMPS/20BDK
100010298 L00013A0319	5 m	mPP-m90°PP StiPP-Sti90°PP	JMPS/50BDK

4.3-10 to 2.2-5 (Screw Type) 4.3-10 auf 2.2-5 (Screw Type)

30.1.7



Part No. Old Part No.	Length Länge	Type Ausführung	Remarks Anmerkungen
100009860 L00010Q0174	0,5 m	mS-mS StiS-StiS	JMPS/057EK
100009861 L00010Q0175	1 m	mS-mS StiS-StiS	JMPS/107EK
100010088 L00011Q0177	2 m	mS-mS StiS-StiS	JMPS/207EK
100010237 L00012Q0169	3 m	mS-mS StiS-StiS	JMPS/307EK
100010404 L00013Q0256	5 m	mS-mS StiS-StiS	JMPS/507EK

30.1

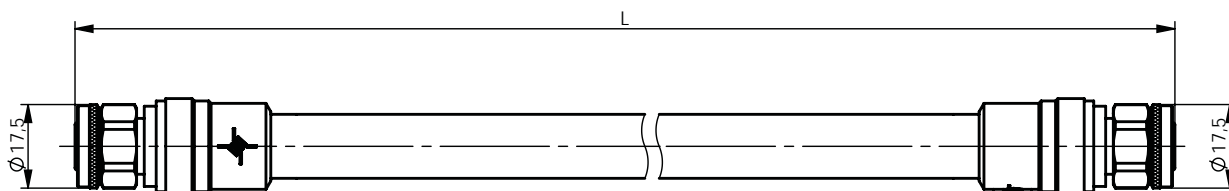
30.1

1/2" Flex Jumper Cable

1/2" Flex Jumper Kabel

30.1.8 2.2-5 to 2.2-5 (Screw Type)

2.2-5 auf 2.2-5 (Screw Type)



Part No. Old Part No.	Length Länge	Type Ausführung	Remarks Anmerkungen
100009862 L00010Q0176	0,5 m	mS-mS StiS-StiS	JMPS/05EEK
100009863 L00010Q0177	1 m	mS-mS StiS-StiS	JMPS/10EEK
100010089 L00011Q0179	2 m	mS-mS StiS-StiS	JMPS/20EEK
100010238 L00012Q0171	3 m	mS-mS StiS-StiS	JMPS/30EEK
100010405 L00013Q0258	5 m	mS-mS StiS-StiS	JMPS/50EEK

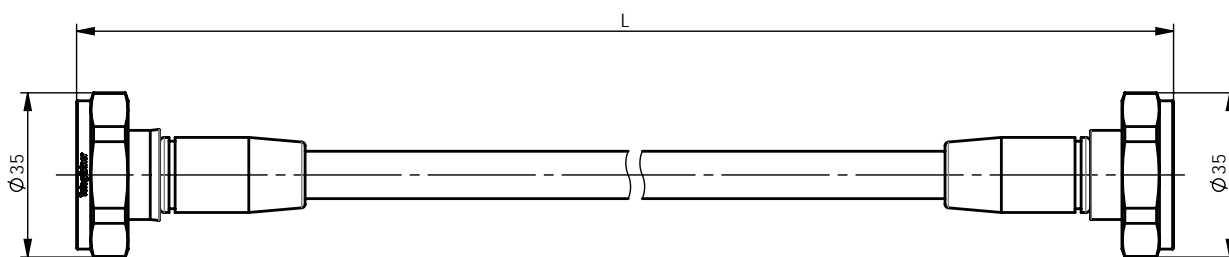
30.2

3/8" Flex Jumper Cable

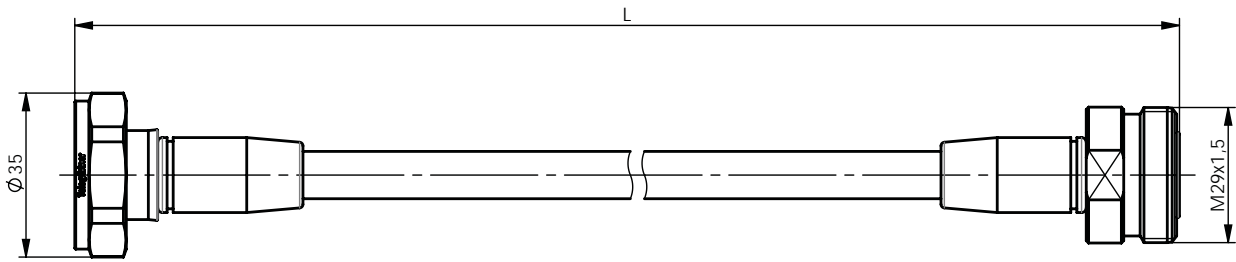
3/8" Flex Jumper Kabel

30.2.1 7-16 to 7-16

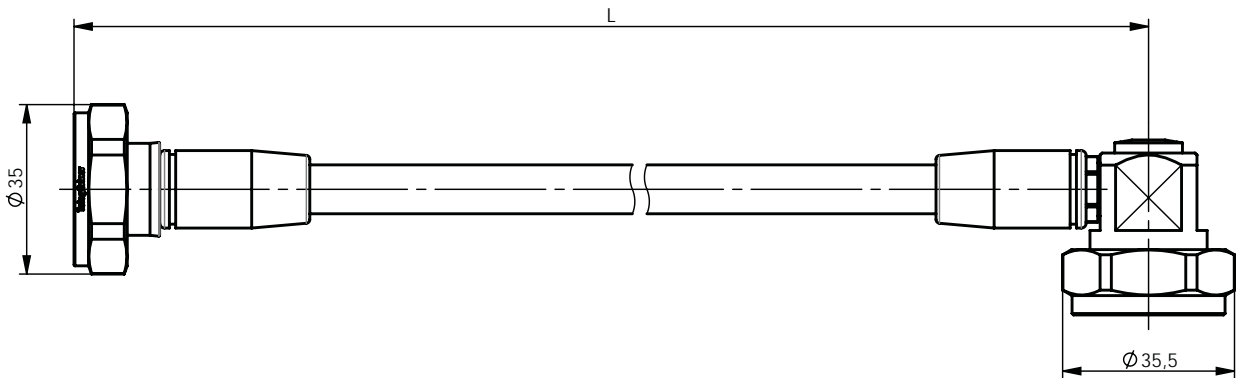
7-16 auf 7-16



Part No. Old Part No.	Length Länge	Type Ausführung	Remarks Anmerkungen
100009627 L00010A1703	0,5 m	m-m Sti-Sti	JMPR/0500T
100009628 L00010A1704	1 m	m-m Sti-Sti	JMPR/1000T
100009937 L00011A0443	2 m	m-m Sti-Sti	JMPR/2000T
100010148 L00012A0242	3 m	m-m Sti-Sti	JMPR/3000T
100010300 L00013A0321	5 m	m-m Sti-Sti	JMPR/5000T



Part No. Old Part No.	Length Länge	Type Ausführung	Remarks Anmerkungen
100009629 L00010A1705	0,5 m	m-f Sti-Bu	JMPR/0501T
100009630 L00010A1706	1 m	m-f Sti-Bu	JMPR/1001T
100009938 L00011A0444	2 m	m-f Sti-Bu	JMPR/2001T
100010149 L00012A0243	3 m	m-f Sti-Bu	JMPR/3001T
100010301 L00013A0322	5 m	m-f Sti-Bu	JMPR/5001T

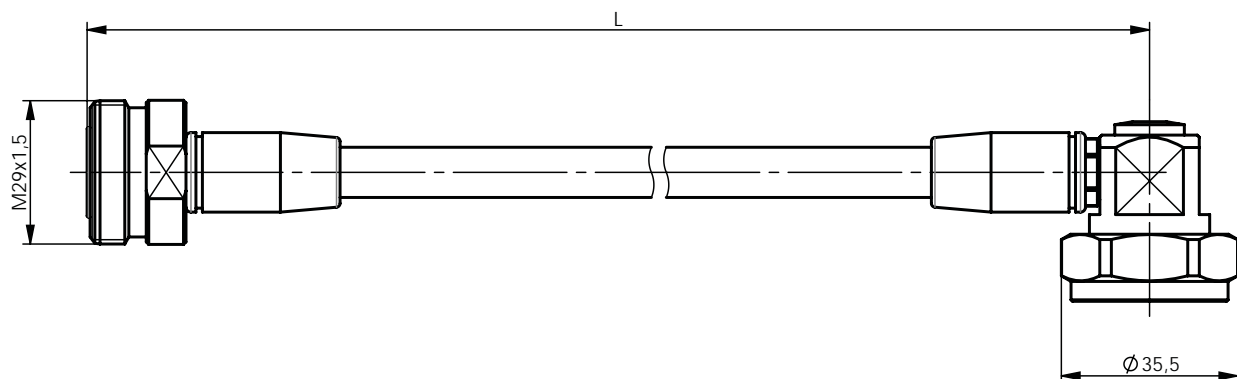


Part No. Old Part No.	Length Länge	Type Ausführung	Remarks Anmerkungen
100009631 L00010A1707	0,5 m	m-m90° Sti-Sti90°	JMPR/0502T
100009632 L00010A1708	1 m	m-m90° Sti-Sti90°	JMPR/1002T
100009939 L00011A0445	2 m	m-m90° Sti-Sti90°	JMPR/2002T
100010150 L00012A0244	3 m	m-m90° Sti-Sti90°	JMPR/3002T
100010302 L00013A0323	5 m	m-m90° Sti-Sti90°	JMPR/5002T

30.2

3/8" Flex Jumper Cable

3/8" Flex Jumper Kabel

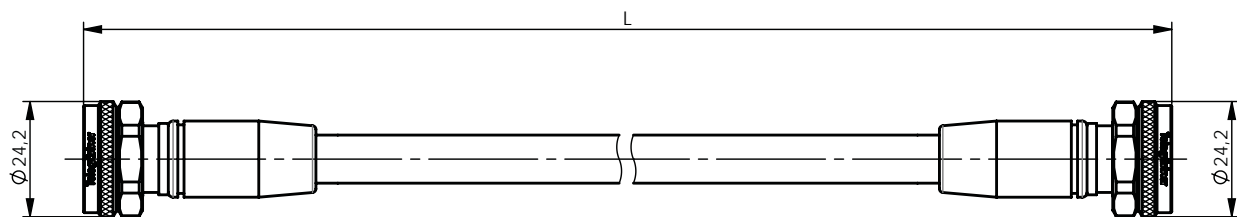


Part No. Old Part No.	Length Länge	Type Ausführung	Remarks Anmerkungen
100009633 L00010A1709	0,5 m	f-m90° Bu-Sti90°	JMPR/0512T
100009634 L00010A1710	1 m	f-m90° Bu-Sti90°	JMPR/1012T
100009940 L00011A0446	2 m	f-m90° Bu-Sti90°	JMPR/2012T
100010151 L00012A0245	3 m	f-m90° Bu-Sti90°	JMPR/3012T
100010303 L00013A0324	5 m	f-m90° Bu-Sti90°	JMPR/5012T

30.2.2

4.3-10 to 4.3-10 (Screw Type)

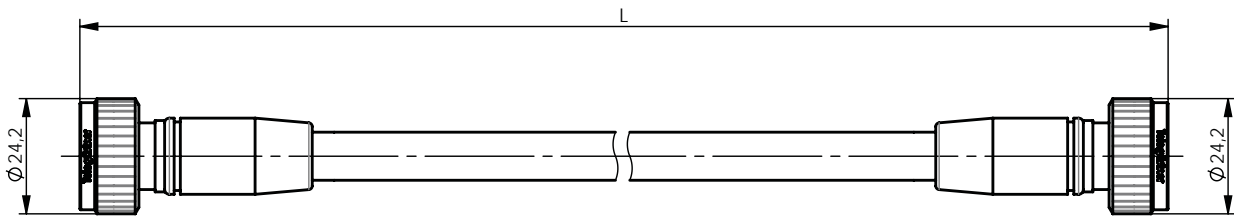
4.3-10 auf 4.3-10 (Screw Type)



Part No. Old Part No.	Length Länge	Type Ausführung	Remarks Anmerkungen
100009635 L00010A1711	0,5 m	mS-mS StiS-StiS	JMPR/0577T
100009636 L00010A1712	1 m	mS-mS StiS-StiS	JMPR/1077T
100009941 L00011A0447	2 m	mS-mS StiS-StiS	JMPR/2077T
100010152 L00012A0246	3 m	mS-mS StiS-StiS	JMPR/3077T
100010304 L00013A0325	5 m	mS-mS StiS-StiS	JMPR/5077T

4.3-10 to 4.3-10 (Hand Screw Type) 4.3-10 auf 4.3-10 (Hand Screw Type)

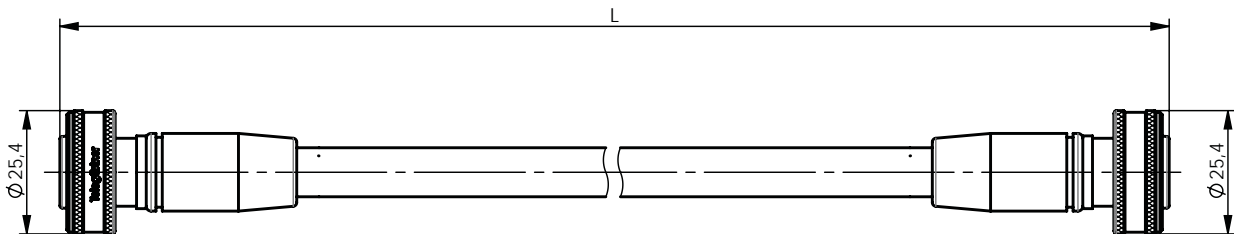
30.2.3



Part No. Old Part No.	Length Länge	Type Ausführung	Remarks Anmerkungen
100009639 L00010A1717	0,5 m	mHS-mHS StiHS-StiHS	JMPR/05AAT
100009640 L00010A1718	1 m	mHS-mHS StiHS-StiHS	JMPR/10AAT
100009943 L00011A0450	2 m	mHS-mHS StiHS-StiHS	JMPR/20AAT
100010154 L00012A0249	3 m	mHS-mHS StiHS-StiHS	JMPR/30AAT
100010306 L00013A0328	5 m	mHS-mHS StiHS-StiHS	JMPR/50AAT

4.3-10 to 4.3-10 (Push Pull Type) 4.3-10 auf 4.3-10 (Push Pull Type)

30.2.4



Part No. Old Part No.	Length Länge	Type Ausführung	Remarks Anmerkungen
100009641 L00010A1719	0,5 m	mPP-mPP StiPP-StiPP	JMPR/05BBT
100009642 L00010A1720	1 m	mPP-mPP StiPP-StiPP	JMPR/10BBT
100009944 L00011A0451	2 m	mPP-mPP StiPP-StiPP	JMPR/20BBT
100010155 L00012A0250	3 m	mPP-mPP StiPP-StiPP	JMPR/30BBT
100010307 L00013A0329	5 m	mPP-mPP StiPP-StiPP	JMPR/50BBT

30.2

30.2

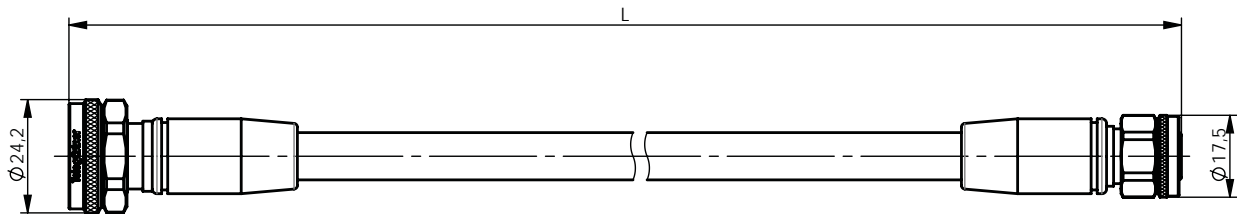
3/8" Flex Jumper Cable

3/8" Flex Jumper Kabel

30.2.5

4.3-10 to 2.2-5 (Screw Type)

4.3-10 auf 2.2-5 (Screw Type)

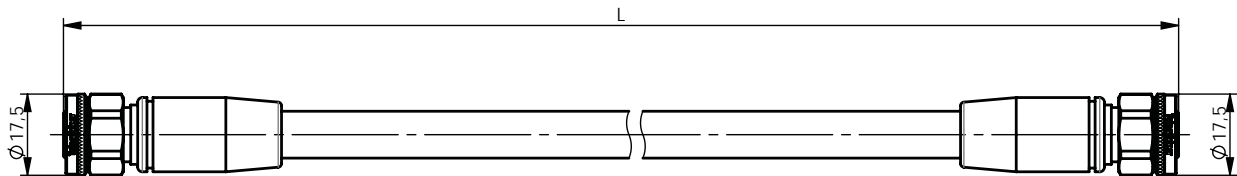


Part No.	Length	Type	Remarks
Old Part No.	Länge	Ausführung	Anmerkungen
100009864	0,5 m	mS-mS	JMPR/057ET
L00010Q0178		StiS-StiS	
100009865	1 m	mS-mS	JMPR/107ET
L00010Q0179		StiS-StiS	
100010090	2 m	mS-mS	JMPR/207ET
L00011Q0181		StiS-StiS	
100010239	3 m	mS-mS	JMPR/307ET
L00012Q0173		StiS-StiS	
100010406	5 m	mS-mS	JMPR/507ET
L00013Q0260		StiS-StiS	

30.2.6

2.2-5 to 2.2-5 (Screw Type)

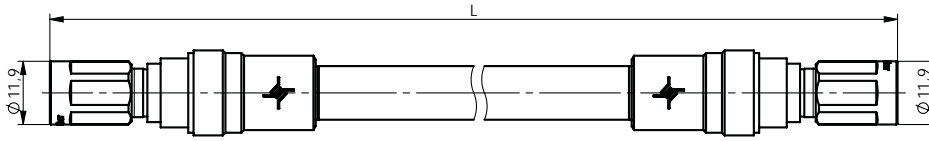
2.2-5 auf 2.2-5 (Screw Type)



Part No.	Length	Type	Remarks
Old Part No.	Länge	Ausführung	Anmerkungen
100009866	0,5 m	mS-mS	JMPR/05EET
L00010Q0180		StiS-StiS	
100009867	1 m	mS-mS	JMPR/10EET
L00010Q0181		StiS-StiS	
100010091	2 m	mS-mS	JMPR/20EET
L00011Q0183		StiS-StiS	
100010240	3 m	mS-mS	JMPR/30EET
L00012Q0175		StiS-StiS	
100010407	5 m	mS-mS	JMPR/50EET
L00013Q0262		StiS-StiS	

NEX10[®] to NEX10[®] (Screw Type) NEX10[®] auf NEX10[®] (Screw Type)

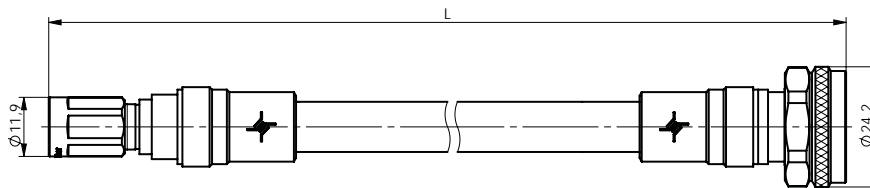
30.2.7



Part No. Old Part No.	Length Länge	Type Ausführung
100025780 L00012Q0190	3 m	mS-mS StiS-StiS
100025783 L00013Q0281	4 m	mS-mS StiS-StiS
100025786 L00013Q0284	5 m	mS-mS StiS-StiS

NEX10[®] to 4.3-10 (Screw Type) NEX10[®] auf 4.3-10 (Screw Type)

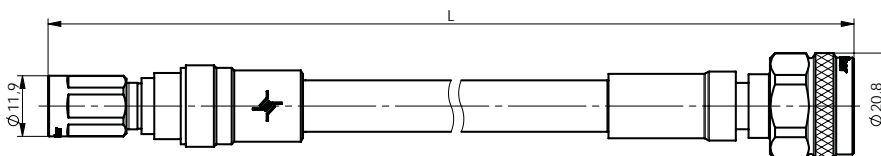
30.2.8



Part No. Old Part No.	Length Länge	Type Ausführung
100025781 L00012Q0191	3 m	mS-mS StiS-StiS
100025784 L00013Q0282	4 m	mS-mS StiS-StiS
100025787 L00013Q0285	5 m	mS-mS StiS-StiS

NEX10[®] to N (Screw Type) NEX10[®] auf N (Screw Type)

30.2.9



Part No. Old Part No.	Length Länge	Type Ausführung
100025782 L00012Q0192	3 m	mS-m StiS-Sti
100025785 L00013Q0283	4 m	mS-m StiS-Sti
100025788 L00013Q0286	5 m	mS-m StiS-Sti

30.3

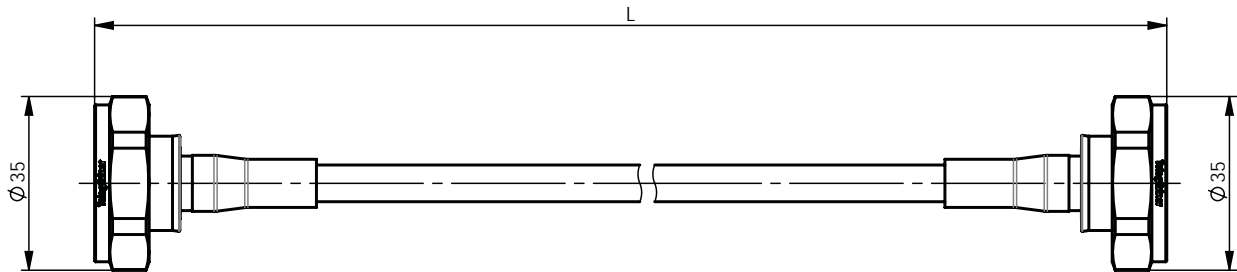
1/4" Flex Jumper Cable

1/4" Flex Jumper Kabel

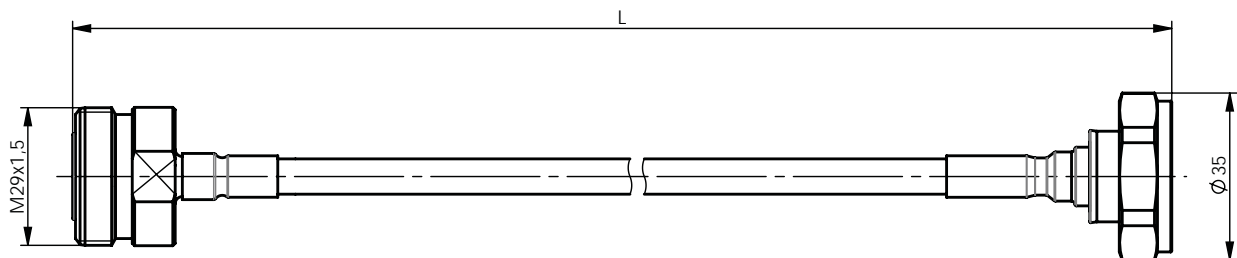
30.3.1

7-16 to 7-16

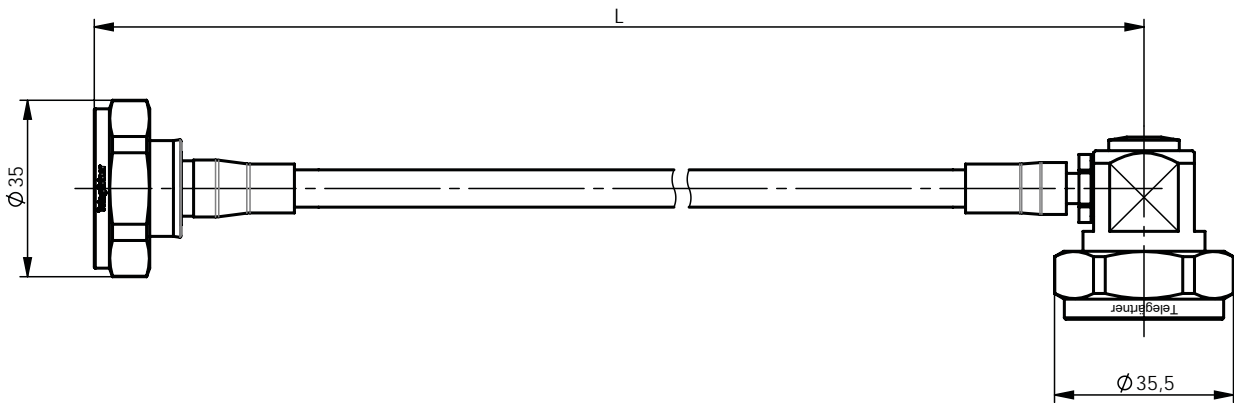
7-16 auf 7-16



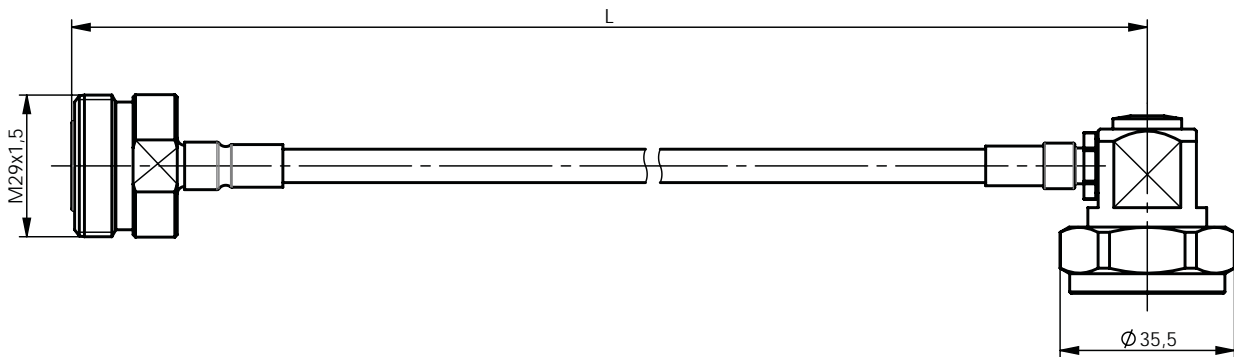
Part No. Old Part No.	Length Länge	Type Ausführung	Remarks Anmerkungen
100009643 L00010A1725	0,5 m	m-m Sti-Sti	JMPR/0500L
100009644 L00010A1726	1 m	m-m Sti-Sti	JMPR/1000L
100009945 L00011A0454	2 m	m-m Sti-Sti	JMPR/2000L
100010156 L00012A0253	3 m	m-m Sti-Sti	JMPR/3000L
100010308 L00013A0332	5 m	m-m Sti-Sti	JMPR/5000L



Part No. Old Part No.	Length Länge	Type Ausführung	Remarks Anmerkungen
100009645 L00010A1727	0,5 m	f-m Bu-Sti	JMPR/0501L
100009646 L00010A1728	1 m	f-m Bu-Sti	JMPR/1001L
100009946 L00011A0455	2 m	f-m Bu-Sti	JMPR/2001L
100010157 L00012A0254	3 m	f-m Bu-Sti	JMPR/3001L
100010309 L00013A0333	5 m	f-m Bu-Sti	JMPR/5001L



Part No. Old Part No.	Length Länge	Type Ausführung	Remarks Anmerkungen
100009647 L00010A1729	0,5 m	m-m90° Sti-Sti90°	JMPR/0502L
100009648 L00010A1730	1 m	m-m90° Sti-Sti90°	JMPR/1002L
100009947 L00011A0456	2 m	m-m90° Sti-Sti90°	JMPR/2002L
100010158 L00012A0255	3 m	m-m90° Sti-Sti90°	JMPR/3002L
100010310 L00013A0334	5 m	m-m90° Sti-Sti90°	JMPR/5002L



Part No. Old Part No.	Length Länge	Type Ausführung	Remarks Anmerkungen
100009649 L00010A1731	0,5 m	f-m90° Bu-Sti90°	JMPR/0512L
100009650 L00010A1732	1 m	f-m90° Bu-Sti90°	JMPR/1012L
100009948 L00011A0457	2 m	f-m90° Bu-Sti90°	JMPR/2012L
100010159 L00012A0256	3 m	f-m90° Bu-Sti90°	JMPR/3012L
100010311 L00013A0335	5 m	f-m90° Bu-Sti90°	JMPR/2012L

30.3

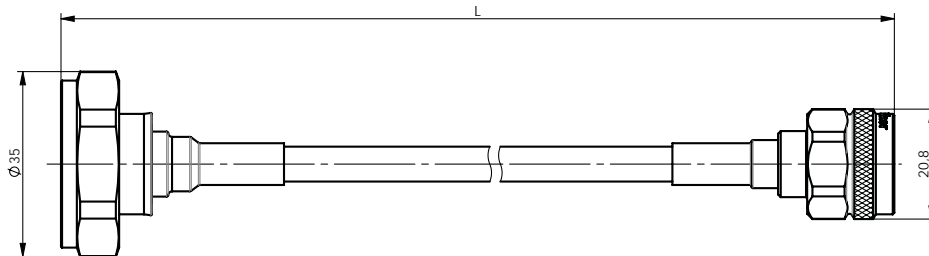
1/4" Flex Jumper Cable

1/4" Flex Jumper Kabel

30.3.2

7-16 to N

7-16 auf N

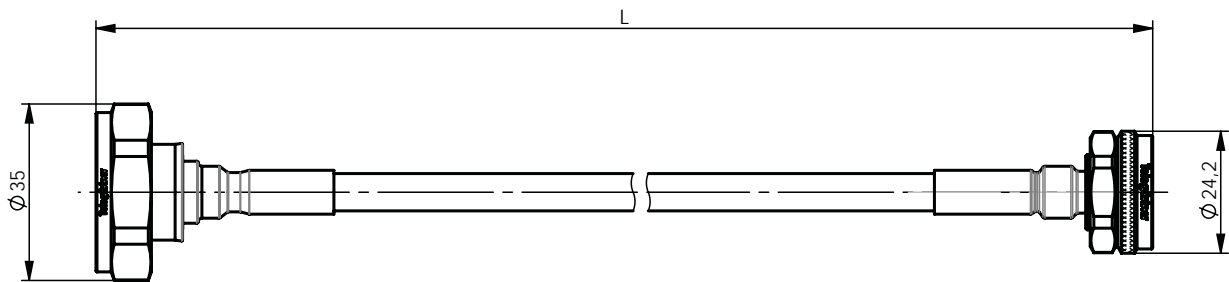


Part No.	Length Länge	Type Ausführung	Remarks Anmerkungen
100009821 L00010Q0124	0,5 m	m-m Sti-Sti	JMPR/0504L
100009822 L00010Q0125	1 m	m-m Sti-Sti	JMPR/1004L
100010063 L00011Q0139	2 m	m-m Sti-Sti	JMPR/2004/L
100010221 L00012Q0139	3 m	m-m Sti-Sti	JMPR/3004L
100010386 L00013Q0218	5 m	m-m Sti-Sti	JMPR/5004L

30.3.3

7-16 to 4.3-10 (Screw Type)

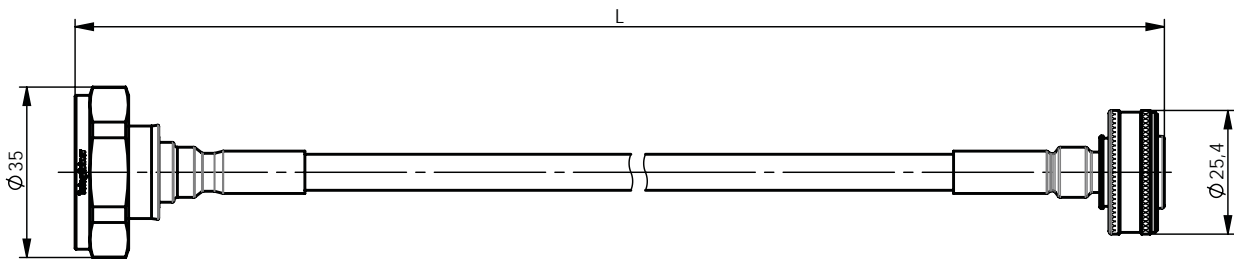
7-16 auf 4.3-10 (Screw Type)



Part No.	Length Länge	Type Type	Remarks Anmerkungen
100009838 L00010Q0152	0,5 m	m-mS Sti-StiS	JMPR/0507L
100009839 L00010Q0153	1 m	m-mS Sti-StiS	JMPR/1007L
100010074 L00011Q0161	2 m	m-mS Sti-StiS	JMPR/2007L
100010228 L00012Q0159	3 m	m-mS Sti-StiS	JMPR/3007L
100010393 L00013Q0244	5 m	m-mS Sti-StiS	JMPR/5007L

7-16 to 4.3-10 (Push Pull Type) 7-16 auf 4.3-10 (Push Pull Type)

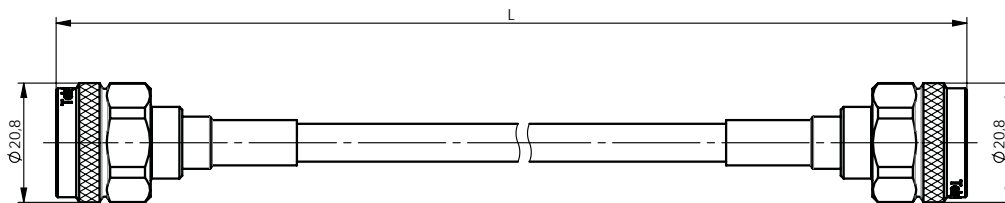
30.3.4



Part No. Old Part No.	Length Länge	Type Type	Remarks Anmerkungen
100009840 L00010Q0154	0,5 m	m-mPP Sti-StiPP	JMPR/050BL
100009841 L00010Q0155	1 m	m-mPP Sti-StiPP	JMPR/100BL
100010075 L00011Q0162	2 m	m-mPP Sti-StiPP	JMPR/200BL
100010229 L00012Q0160	3 m	m-mPP Sti-StiPP	JMPR/300BL
100010394 L00013Q0245	5 m	m-mPP Sti-StiPP	JMPR/500BL

N to N N auf N

30.3.5



Part No. Old Part No.	Length Länge	Type Ausführung	Remarks Anmerkungen
100009823 L00010Q0134	0,5 m	m-m Sti-Sti	JMPR/0544L
100009824 L00010Q0135	1 m	m-m Sti-Sti	JMPR/1044L
100010065 L00011Q0149	2 m	m-m Sti-Sti	JMPR/2044L
100010222 L00012Q0149	3 m	m-m Sti-Sti	JMPR/3044L
100010387 L00013Q0233	5 m	m-m Sti-Sti	JMPR/5044L

30.3

30.3

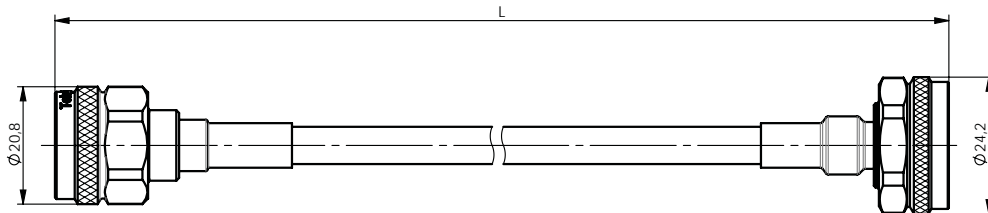
1/4" Flex Jumper Cable

1/4" Flex Jumper Kabel

30.3.6

N to 4.3-10 (Screw Type)

N auf 4.3-10 (Screw Type)

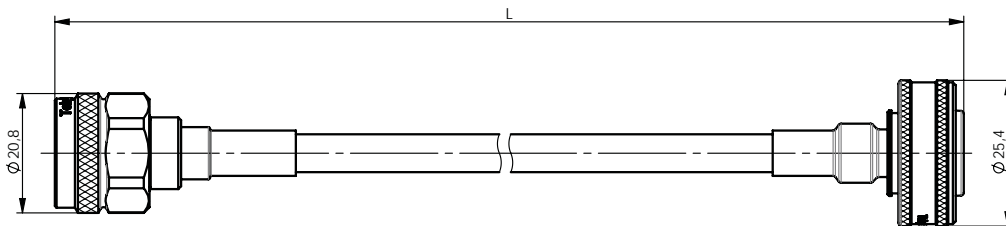


Part No.	Length	Type	Remarks
Old Part No.	Länge	Type	Anmerkungen
100009834	0,5 m	m-mS	JMPR/0547L
L00010Q0148		Sti-StiS	
100009835	1 m	m-mS	JMPR/1047L
L00010Q0149		Sti-StiS	
100010072	2 m	m-mS	JMPR/2047L
L00011Q0159		Sti-StiS	
100010226	3 m	m-mS	JMPR/3047L
L00012Q0157		Sti-StiS	
100010391	5 m	m-mS	JMPR/5047L
L00013Q0242		Sti-StiS	

30.3.7

N to 4.3-10 (Push Pull Type)

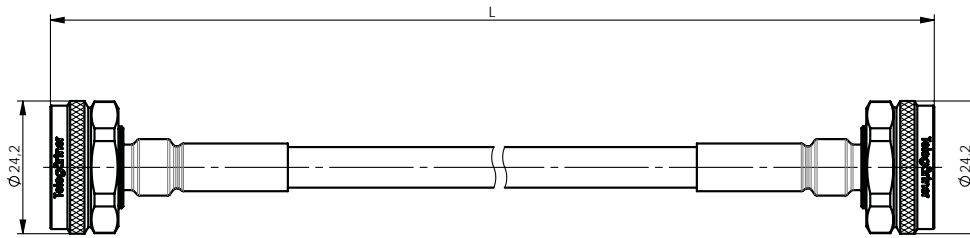
N auf 4.3-10 (Push Pull Type)



Part No.	Length	Type	Remarks
Old Part No.	Länge	Type	Anmerkungen
100009836	0,5 m	m-mPP	JMPR/054BL
L00010Q0150		Sti-StiPP	
100009837	1 m	m-mPP	JMPR/104BL
L00010Q0151		Sti-StiPP	
100010073	2 m	m-mPP	JMPR/204BL
L00011Q0160		Sti-StiPP	
100010227	3 m	m-mPP	JMPR/304BL
L00012Q0158		Sti-StiPP	
100010392	5 m	m-mPP	JMPR/504BL
L00013Q0243		Sti-StiPP	

4.3-10 to 4.3-10 (Screw Type) 4.3-10 auf 4.3-10 (Screw Type)

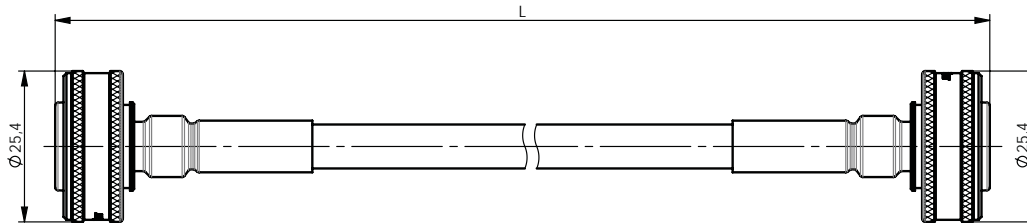
30.3.8



Part No. Old Part No.	Length Länge	Type Ausführung	Remarks Anmerkungen
100009829 L00010Q0143	0,5 m	mS-mS StiS-StiS	JMPR/0577L
100009827 L00010Q0141	1 m	mS-mS StiS-StiS	JMPR/1077L
100010068 L00011Q0155	2 m	mS-mS StiS-StiS	JMPR/2077L
100010223 L00012Q0154	3 m	mS-mS StiS-StiS	JMPR/3077L
100010388 L00013Q0239	5 m	mS-mS StiS-StiS	JMPR/5077L

4.3-10 to 4.3-10 (Push Pull Type) 4.3-10 auf 4.3-10 (Push Pull Type)

30.3.9



Part No. Old Part No.	Length Länge	Type Type	Remarks Anmerkungen
100009830 L00010Q0144	0,5 m	mPP-mPP StiPP-StiPP	JMPR/05BBL
100009831 L00010Q0145	1 m	mPP-mPP StiPP-StiPP	JMPR/10BBL
100010070 L00011Q0157	2 m	mPP-mPP StiPP-StiPP	JMPR/20BBL
100010224 L00012Q0155	3 m	mPP-mPP StiPP-StiPP	JMPR/30BBL
100010389 L00013Q0240	5 m	mPP-mPP StiPP-StiPP	JMPR/50BBL

30.3

30.3

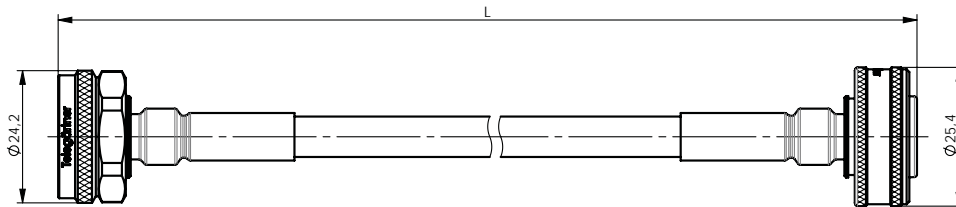
1/4" Flex Jumper Cable

1/4" Flex Jumper Kabel

30.3.10

4.3-10 (Screw Type) to 4.3-10 (Push Pull Type)

4.3-10 (Screw Type) auf 4.3-10 (Push Pull Type)

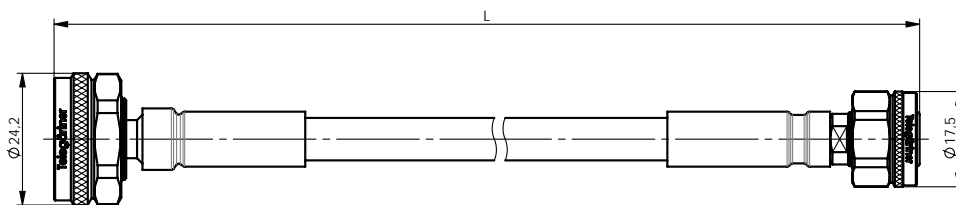


Part No. Old Part No.	Length Länge	Type Type	Remarks Anmerkungen
100009832 L00010Q0146	0,5 m	mS-mPP StiS-StiPP	JMPR/057BL
100009833 L00010Q0147	1 m	mS-mPP StiS-StiPP	JMPR/107BL
100010071 L00011Q0158	2 m	mS-mPP StiS-StiPP	JMPR/207BL
100010225 L00012Q0156	3 m	mS-mPP StiS-StiPP	JMPR/307BL
100010390 L00013Q0241	5 m	mS-mPP StiS-StiPP	JMPR/507BL

30.3.11

4.3-10 to 2.2-5 (Screw Type)

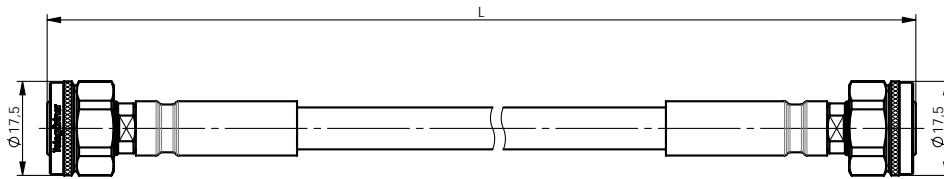
4.3-10 auf 2.2-5 (Screw Type)



Part No. Old Part No.	Length Länge	Type Ausführung	Remarks Anmerkungen
100009868 L00010Q0182	0,5 m	mS-mS StiS-StiS	JMPR/057EL
100009869 L00010Q0183	1 m	mS-mS StiS-StiS	JMPR/107EL
100010092 L00011Q0185	2 m	mS-mS StiS-StiS	JMPR/207EL
100010241 L00012Q0177	3 m	mS-mS StiS-StiS	JMPR/307EL
100010408 L00013Q0264	5 m	mS-mS StiS-StiS	JMPR/507EL

2.2-5 to 2.2-5 (Screw Type) 2.2-5 auf 2.2-5 (Screw Type)

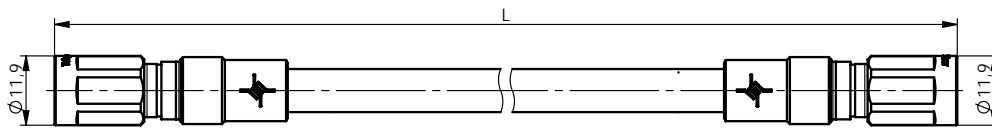
30.3.12



Part No. Old Part No.	Length Länge	Type Ausführung	Remarks Anmerkungen
100009870 L00010Q0184	0,5 m	mS-mS StiS-StiS	JMPR/05EEL
100009871 L00010Q0185	1 m	mS-mS StiS-StiS	JMPR/10EEL
100010093 L00011Q0187	2 m	mS-mS StiS-StiS	JMPR/20EEL
100010242 L00012Q0179	3 m	mS-mS StiS-StiS	JMPR/30EEL
100010409 L00013Q0266	5 m	mS-mS StiS-StiS	JMPR/50EEL

NEX10® to NEX10® (Screw Type) NEX10® auf NEX10® (Screw Type)

30.3.13



Part No. Old Part No.	Length Länge	Type Ausführung	Remarks Anmerkungen
100025771 L00010Q0214	1 m	mS-mS StiS-StiS	
100025774 L00011Q0199	2 m	mS-mS StiS-StiS	Panel sealed, IP 67 löt/klemm; Druckverschraubung IP67
100025777 L00012Q0187	3 m	mS-mS StiS-StiS	

30.3

30.3

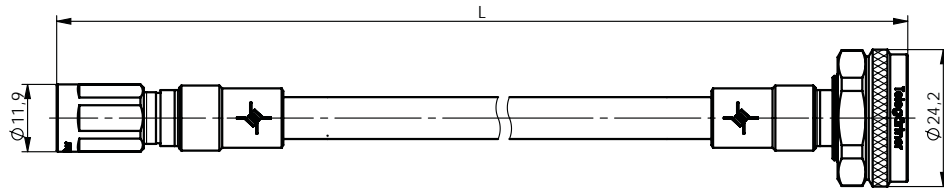
1/4" Flex Jumper Cable

1/4" Flex Jumper Kabel

30.3.14

NEX10® to 4.3-10 (Screw Type)

NEX10® auf 4.3-10 (Screw Type)

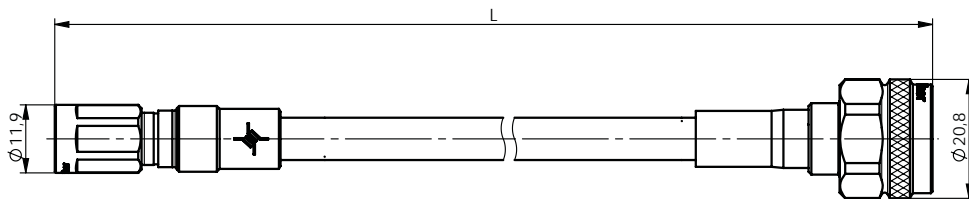


Part No.	Length	Type
Old Part No.	Länge	Ausführung
100025772	1 m	mS-mS
L00010Q0215		StiS-StiS
100025775	2 m	mS-mS
L00011Q0200		StiS-StiS
100025778	3 m	mS-mS
L00012Q0188		StiS-StiS

30.3.15

NEX10® (Screw Type) to N

NEX10® (Screw Type) auf N



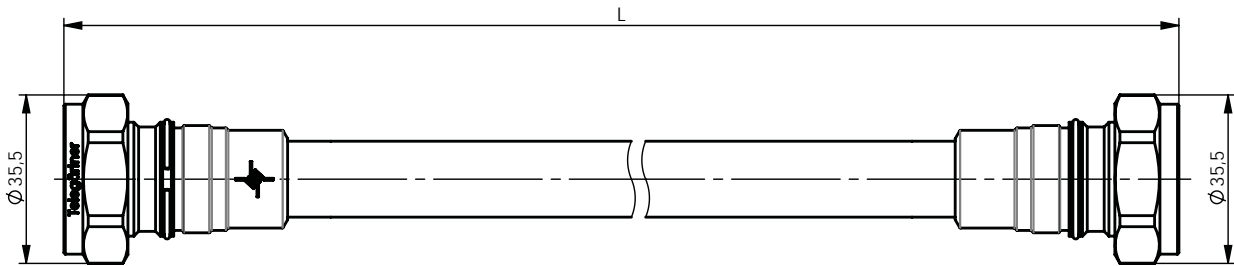
Part No.	Length	Type	Remarks
Old Part No.	Länge	Ausführung	Anmerkungen
100025773	1 m	mS-m	
L00010Q0216		StiS-Sti	
100025776	2 m	mS-m	
L00011Q0201		StiS-Sti	
100025779	3 m	mS-m	m-m, Screw
L00012Q0189		StiS-Sti	

1/2" Feeder Jumper Cable 1/2" Feeder Jumper Kabel

30.4

7-16 to 7-16
7-16 auf 7-16

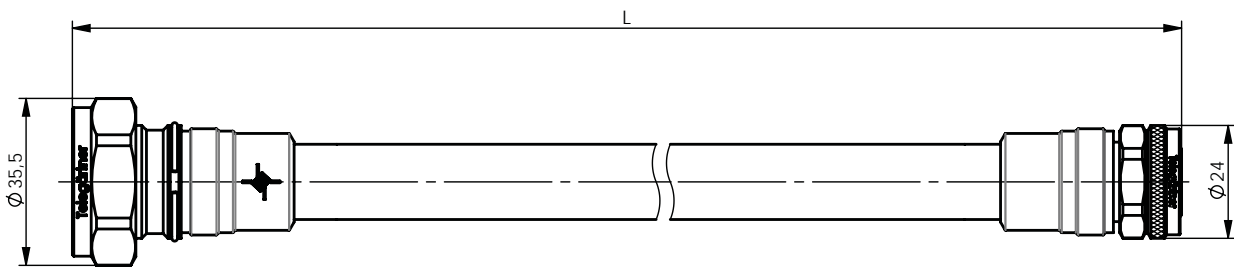
30.4.1



Part No. Old Part No.	Length Länge	Type Ausführung	Remarks Anmerkungen
100009753 L00010A3552	0,5 m	m-m Sti-Sti	JMPS/0500D
100009754 L00010A3553	1 m	m-m Sti-Sti	JMPS/1000D
100010014 L00011A3185	2 m	m-m Sti-Sti	JMPS/2000D
100010181 L00012A3064	3 m	m-m Sti-Sti	JMPS/3000D
100010299 L00013A0320	5 m	m-m Sti-Sti	JMPS/5000D

7-16 to 4.3-10 (Screw Type)
7-16 auf 4.3-10 (Screw Type)

30.4.2



Part No. Old Part No.	Length Länge	Type Ausführung	Remarks Anmerkungen
100009842 L00010Q0156	0,5 m	m-mS Sti-StiS	JMPS/0507D
100009843 L00010Q0157	1 m	m-mS Sti-StiS	JMPS/1007D
100010076 L00011Q0163	2 m	m-mS Sti-StiS	JMPS/2007D
100010230 L00012Q0161	3 m	m-mS Sti-StiS	JMPS/3007D
100010395 L00013Q0246	5 m	m-mS Sti-StiS	JMPS/5007D

30.4

30.4

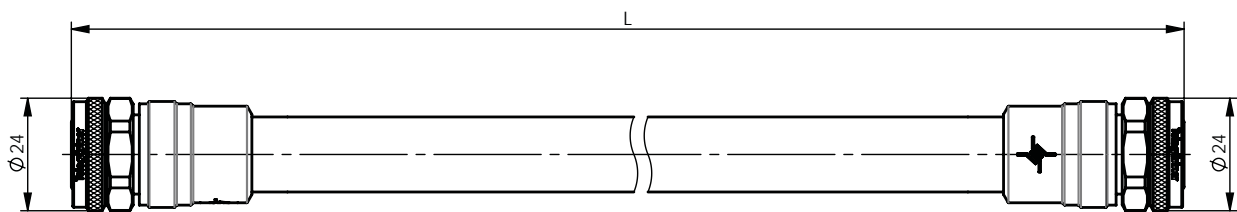
1/2" Feeder Jumper Cable

1/2" Feeder Jumper Kabel

30.4.3

4.3-10 to 4.3-10 (Screw Type)

4.3-10 auf 4.3-10 (Screw Type)



Part No. Old Part No.	Length Länge	Type Ausführung	Remarks Anmerkungen
100009844 L00010Q0158	0,5 m	mS-mS StiS-StiS	JMPS/0577D
100009845 L00010Q0159	1 m	mS-mS StiS-StiS	JMPS/1077D
100010077 L00011Q0164	2 m	mS-mS StiS-StiS	JMPS/2077D
100010231 L00012Q0162	3 m	mS-mS StiS-StiS	JMPS/3077D
100010396 L00013Q0247	5 m	mS-mS StiS-StiS	JMPS/5077D